

Gift Card Holder with Surprise Pop-Up Gift Bag

| | |
|---------------|---|
| Stamps/Dies | Whimsical Trees Bundles |
| Paper | Whimsy & Wonder DSP Polished Pink, Misty Moonlight, Basic White |
| Inks/Coloring | Polished Pink, Misty Moonlight, Mint Macaron, Memento Tuxedo Black, Stampin' Blends in Mint Macaron and Polished Pink |
| Adhesives | Stampin' Dimensionals, Tear & Tape, Mini Glue Dots, Tombow Multipurpose Liquid Glue |
| Tools | Trimmer, Snips, Bone Folder, Hole Punch, Clear Blocks, Mini Stampin' Cut & Emboss Machine |
| Other | White Glittered Organdy Ribbon |

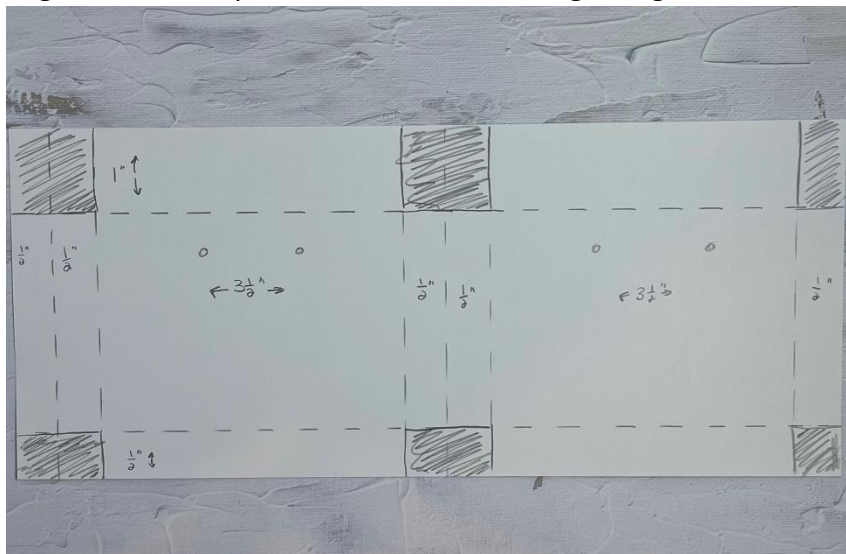


Paper/Scoring Measurements:

- DSP for pop-up gift bag: 4" x 9 1/2"; along 4" side, score at 1" and 3 1/2"; along 9 1/2" side, score at 1/2", 1", 4 1/2", 5", 5 1/2", and 9"
- Cardbase: 4 1/2" x 11", score at 3 1/2" and 8 1/2" along the 11" side
- DSP for front: 4" x 3 1/2" and 4" x 2 1/4"
- DSP for inside: 4" x 2 1/4" and 4" x 2 3/4"
- Basic White for sentiment/greeting: 4" x 4" (and a scrap for the tree on front)
- Belly Band: 1 1/2" x 11"

To assemble:

- Score your cardbase and DSP for gift bag – burnish well with bone folder. The two sections of the gift bag scored a 1/2" apart will fold in like a real gift bag. Cut out notches as noted below:



I used an old hole punch to cut my bag handle holes below the 1" score line – to make it easier, you can fold bag over to get both sides at once. I strung a 5" piece of ribbon through each side, secured with clear tape, then used Tear & Tape to adhere the 1" flap down and over that so it cannot be seen. Next, use Tear & Tape to secure the 'lone' ½" panel (on the right here) over the left most ½" panel.

- To adhere your gift bag into your card – place Tear & Tape on the bottom ½" tabs of your gift bag. Place into card (in the crease of the 3 ½" score mark) and carefully close card. When you open, the gift bag should pop right up.
- Decorate the front and inside flaps as you wish with the DSP and Basic White panel.
- I wrapped my belly band around the card and secured in the back with glue. I did not prescore but folded and then burnished. I wrapped a 15" piece of ribbon around the belly band for some sparkle and then placed a tree from the stamp set next to the knot.

Links to supplies:

Product List

- [Whimsical Trees Bundle \(English\) \[156810\] \\$51.25](#)
- [Whimsy & Wonder 12" X 12" \(30.5 X 30.5 Cm\) Specialty Designer Series Paper \[156329\] \\$15.00](#)
- [Polished Pink 8 1/2" X 11" Cardstock \[155710\] \\$8.75](#)
- [Basic White 8 1/2" X 11" Cardstock \[159276\] \\$9.75](#)
- [Misty Moonlight 8-1/2" X 11" Cardstock \[153081\] \\$8.75](#)
- [Polished Pink Classic Stampin' Pad \[155712\] \\$7.50](#)
- [Misty Moonlight Classic Stampin' Pad \[153118\] \\$7.50](#)
- [Mint Macaron Classic Stampin' Pad \[147106\] \\$7.50](#)
- [Tuxedo Black Memento Ink Pad \[132708\] \\$6.00](#)
- [Mint Macaron Stampin' Blends Combo Pack \[154889\] \\$9.00](#)
- [Polished Pink Stampin' Blends Combo Pack \[155520\] \\$9.00](#)
- [White 3/8" \(1 Cm\) Glittered Organdy Ribbon \[156408\] \\$8.50](#)
- [Paper Snips \[103579\] \\$10.00](#)
- [Paper Trimmer \[152392\] \\$25.00](#)
- [Bone Folder \[102300\] \\$7.00](#)
- [Clear Block D \[118485\] \\$8.50](#)
- [Mini Stampin' Cut & Emboss Machine \[150673\] \\$60.00](#)
- [Tear & Tape Adhesive \[138995\] \\$7.00](#)
- [Mini Glue Dots \[103683\] \\$5.25](#)
- [Multipurpose Liquid Glue \[110755\] \\$4.00](#)
- [Stampin' Dimensionals \[104430\] \\$4.00](#)